

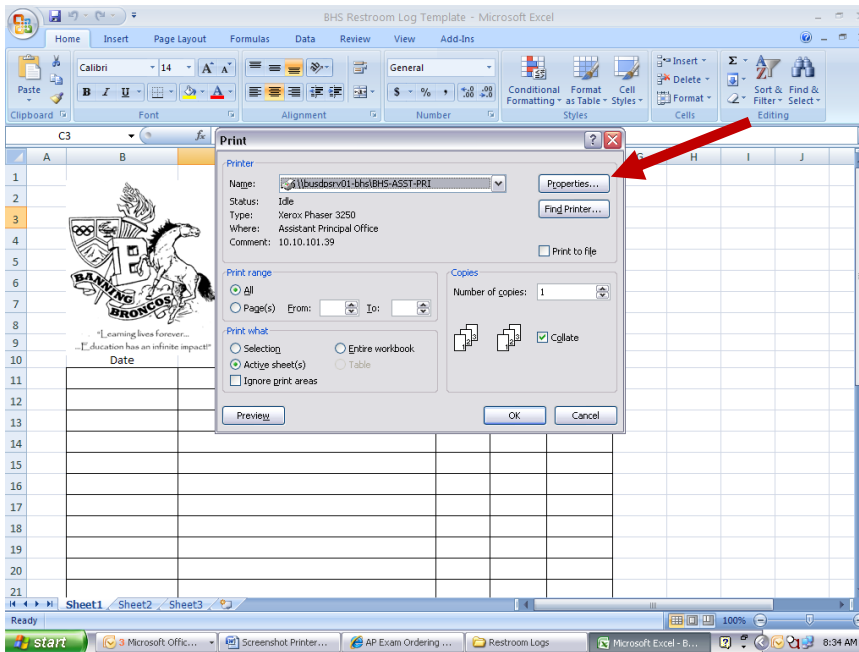
Double Sided Printing

Xerox Phaser 3250

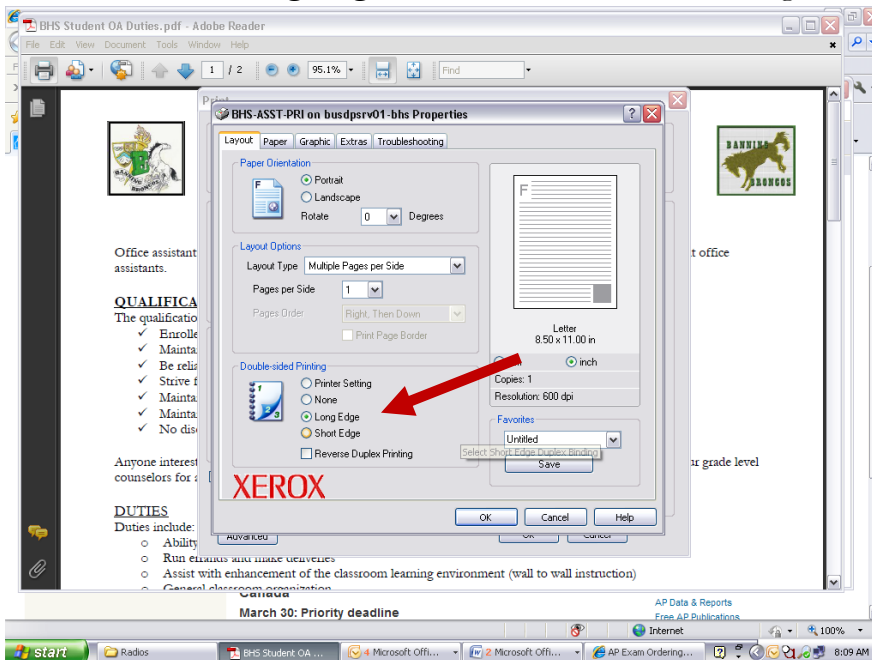
To print double sided on the Xerox Phaser 3250 please follow these instructions:

Instructions:

1. When ready to print, select **File**, then select **Print** or (**Ctrl +P**)
2. In the open window, select **Properties** in the upper right hand corner (see figure below).



3. In the open window, select **Long Edge** under the Double-sided Printing setting (see figure below).



4. Select **Ok**, then back in the original print window, select **ok**, and enjoy the output you receive. ☺